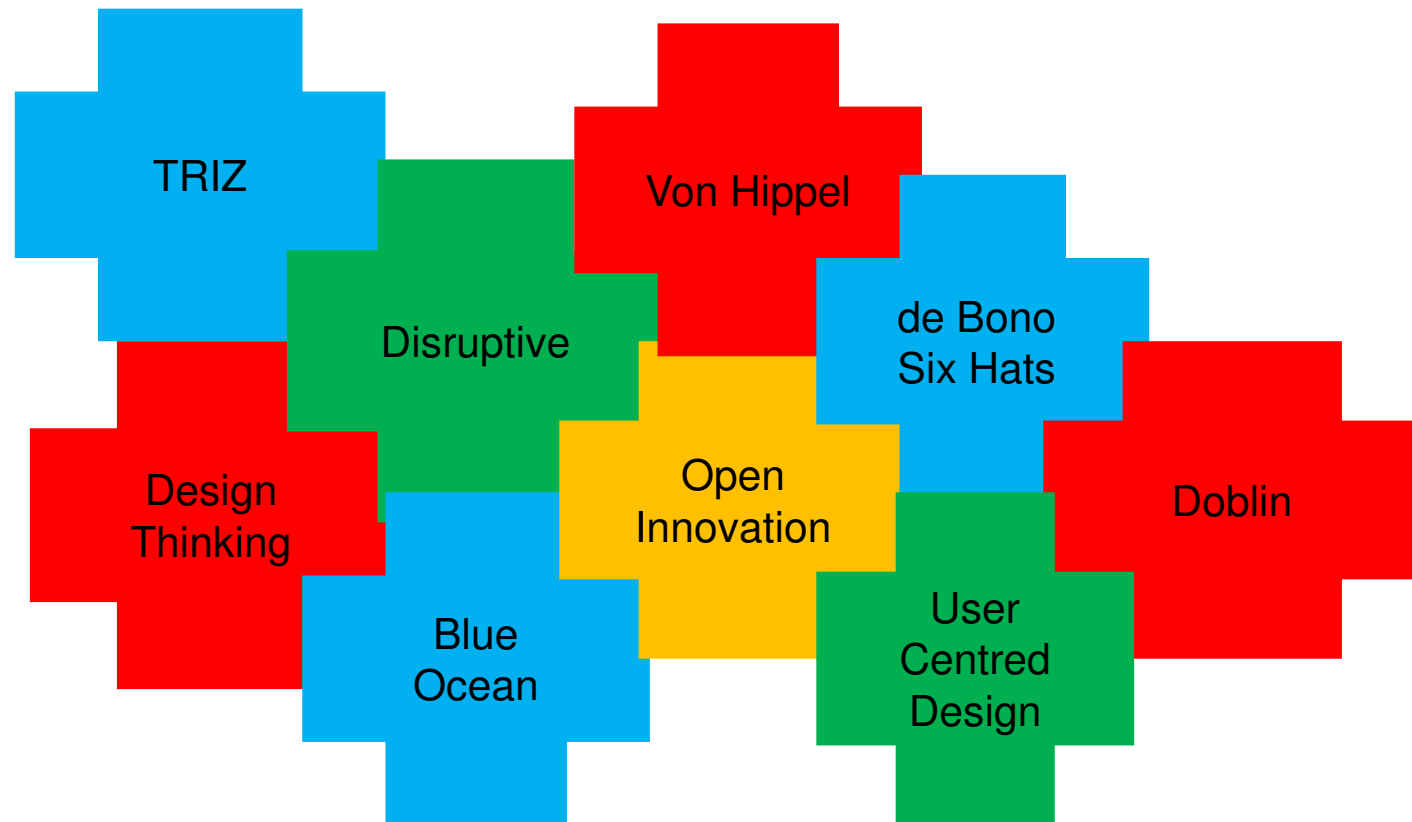


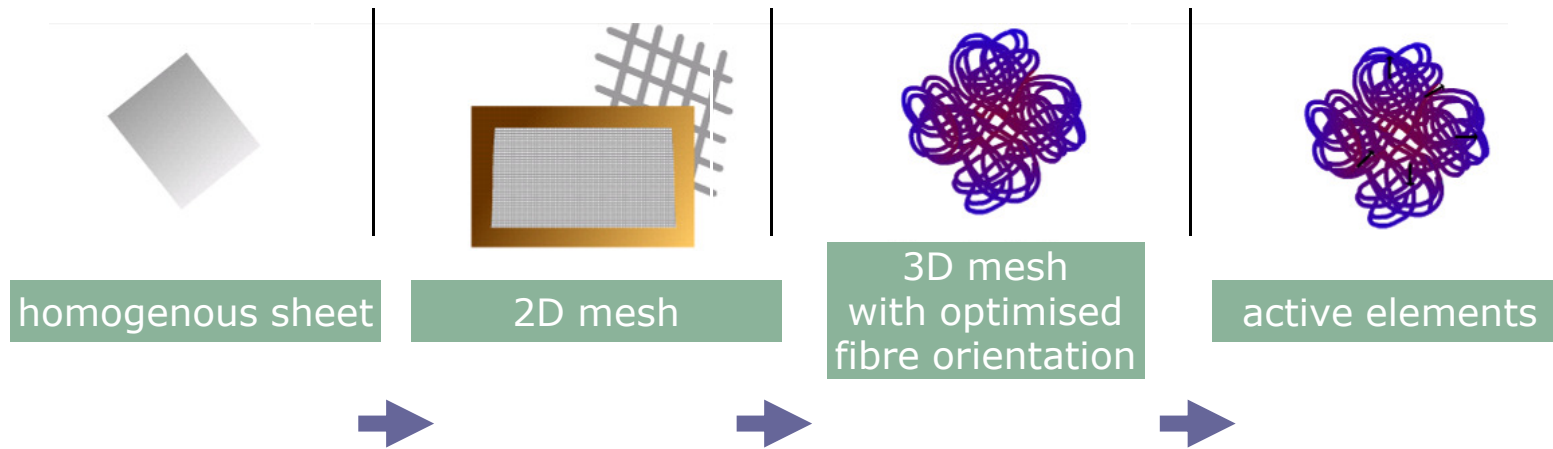


1st Michael McNamara Annual Lecture

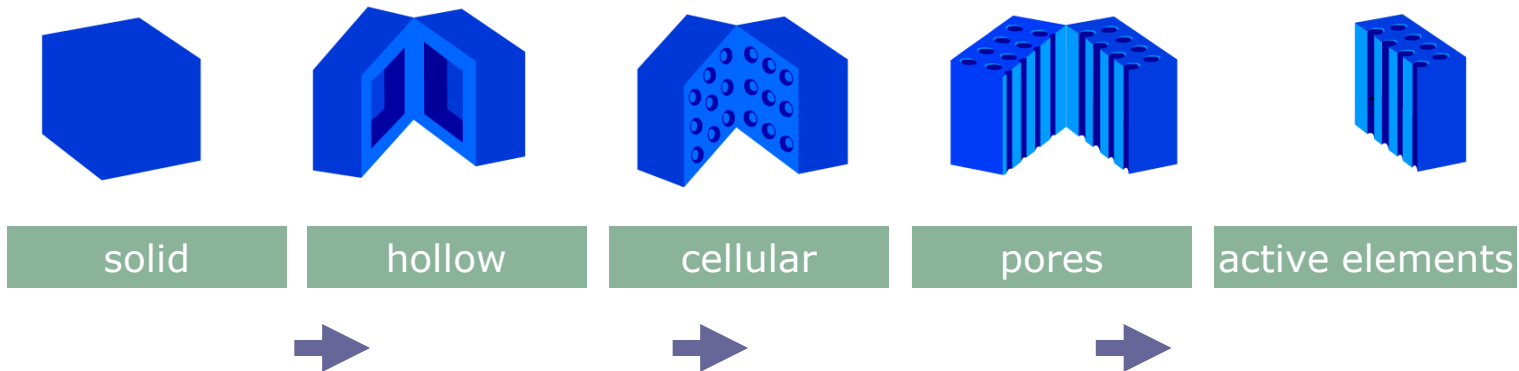
Professor Mark Dyer
Michael McNamara Chair in Construction Innovation

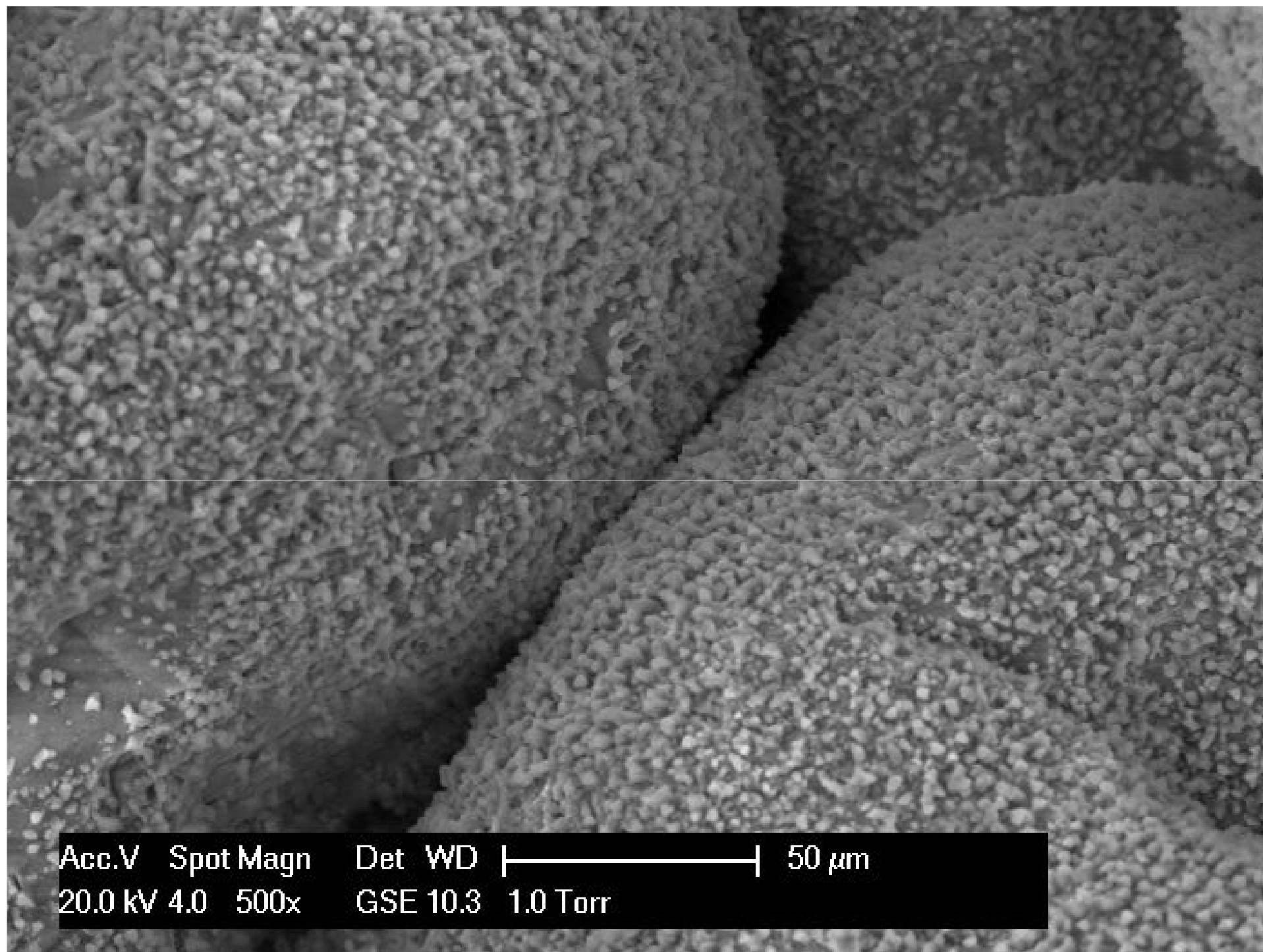


TRIZ Evolutionary Trends



TRIZ Evolutionary Trends







Gateshead Millennium Bridge: Designed by Wilkinson Eyre Architects and engineered by Gifford and Partners 1996-2000



www.mythicalireland.com

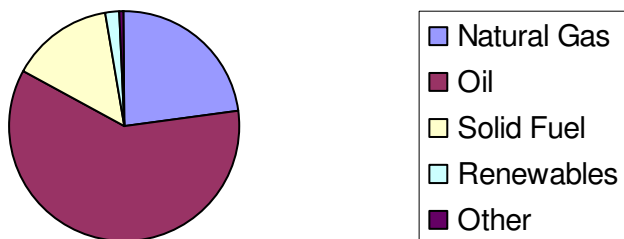


Energy Efficiency

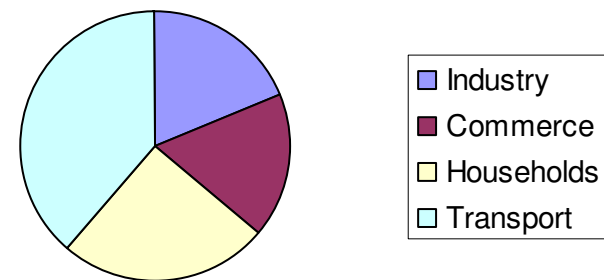


Embodied Energy

2004 Primary Energy Supply
(51% increase post 1990)



2004 Energy Consumption



GREENprint. Dublin as a living laboratory for a low carbon society

TrinityHaus

- **McNamara Centre** innovation for the construction process and parts of the supply chain most receptive to innovation.
- **GREENprint** - Dublin as a living laboratory for transformation towards a low carbon society
- **I-School** - collaboration with CEUD, Design 21C and de Bono Foundation to promote innovative design and creative thinking methodologies in a studio environment

