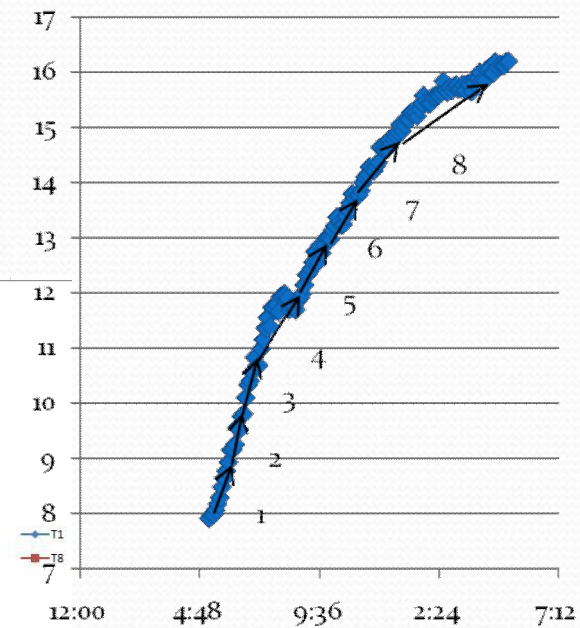
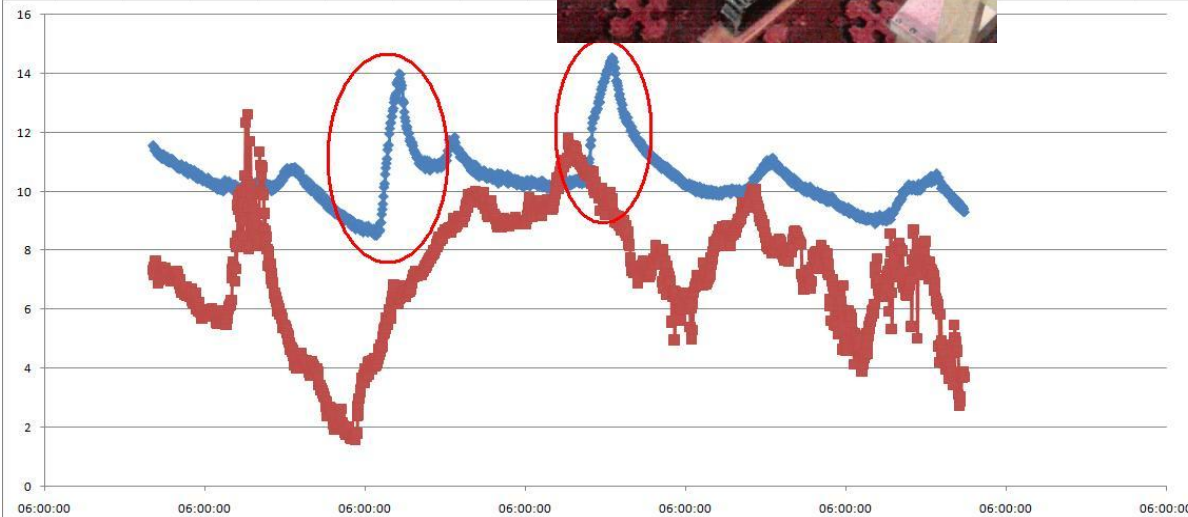
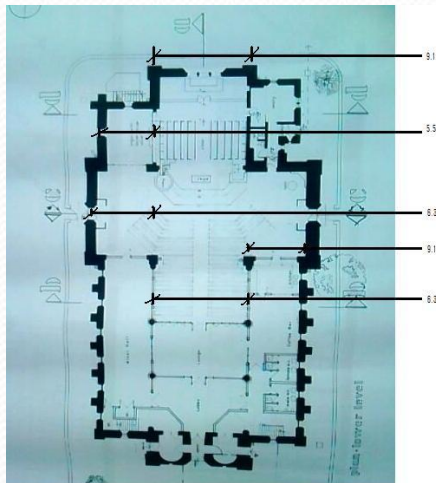


Construction Innovation Research Projects 2009

Dr Roger West
TrinityHaus

Energy Management in Churches



College Sustainability and the Green Campus

- Sustainability strategy
- Areas for improvement
 - CHP
 - Solar power
 - Wind power
 - Thermal mass
 - Grey water
 - Waste disposal
 - Retrofitting insulation
 - Cement usage
 - Transport to work
 - Electrical vehicles
 - Parking
 - etc

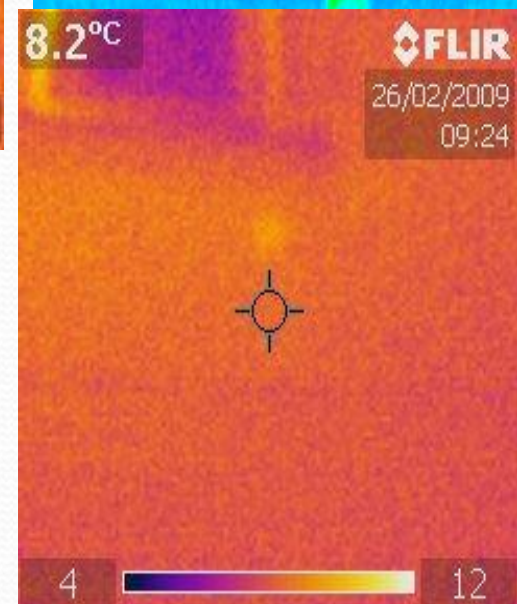
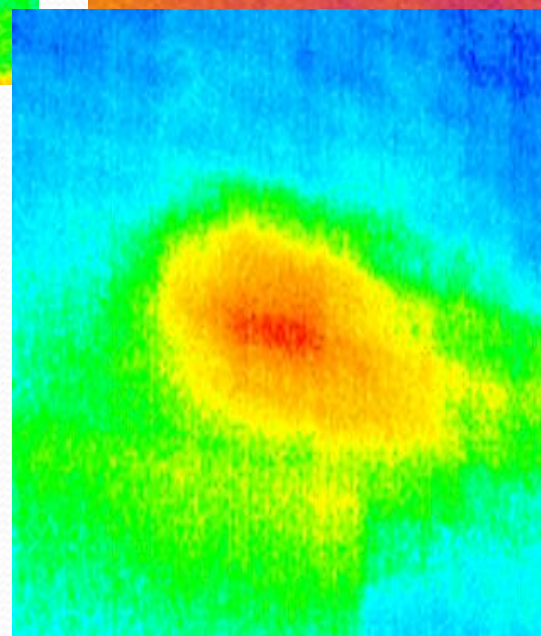
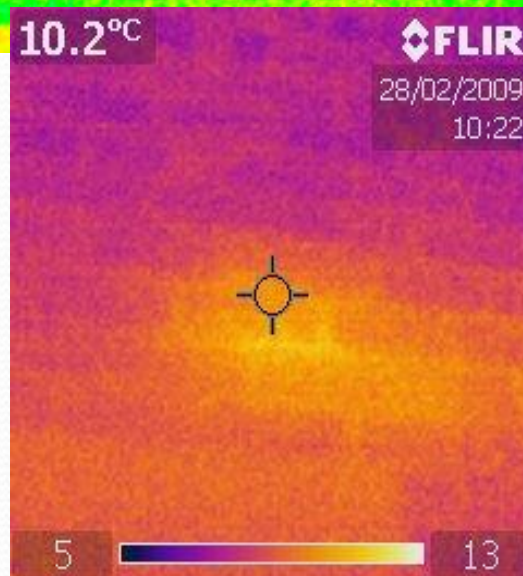
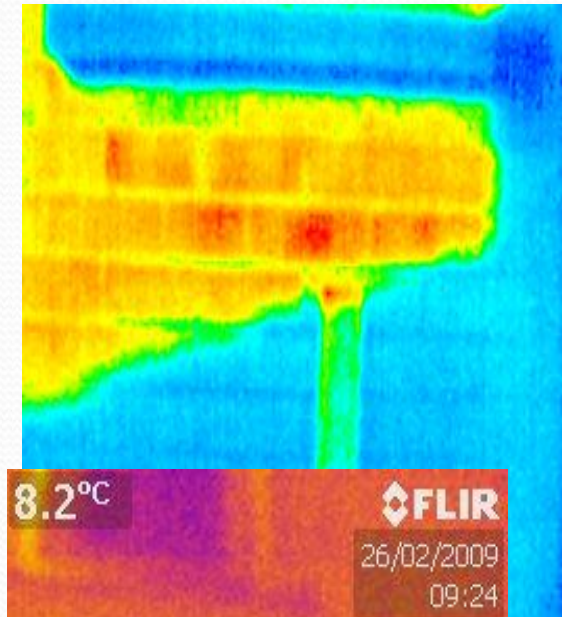
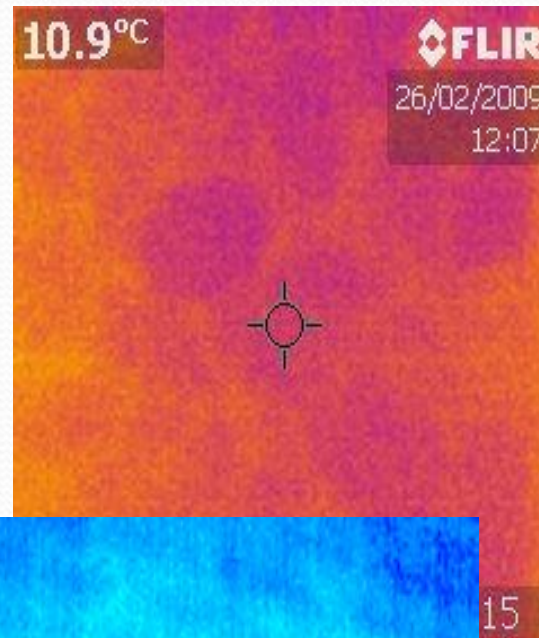
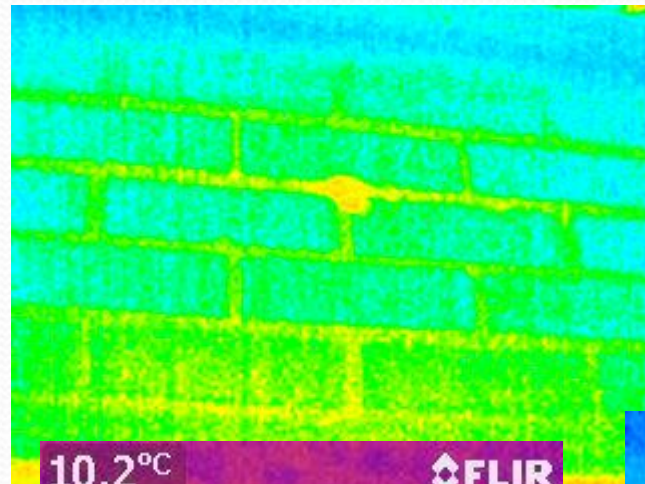
Grass Insulation



E-Procurement

- CITA and Innovation
 - Three-way match electronically
 - Generic product codes
 - CITA Hub
 - Business Case

Performance Testing of Houses under BER



Concrete Technology

- Cement replacement – Ash in Ireland?
- Cement usage – substantial reductions through design
- Cement reduction – over-conservatism in standards
- Irish Limestone aggregates
- High fibre contents
- National survey of ready-mix concrete

Beaded Insulation

